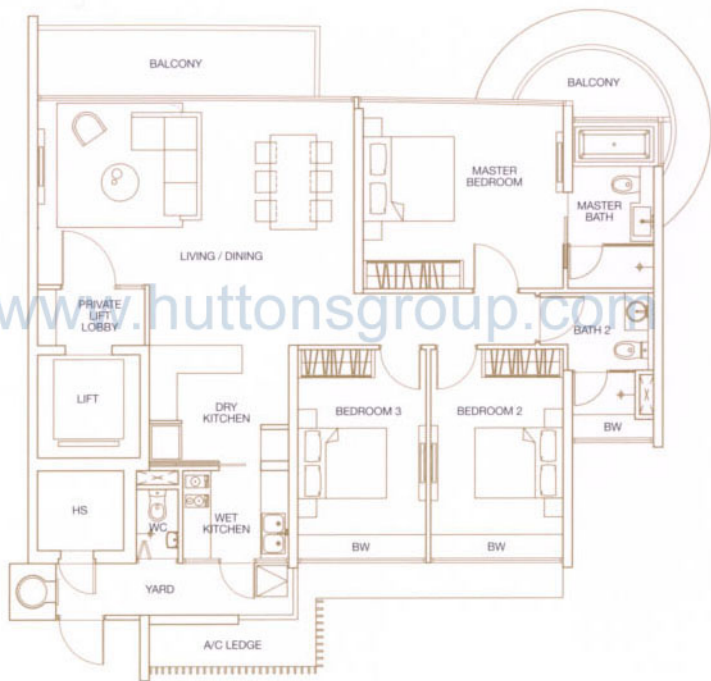


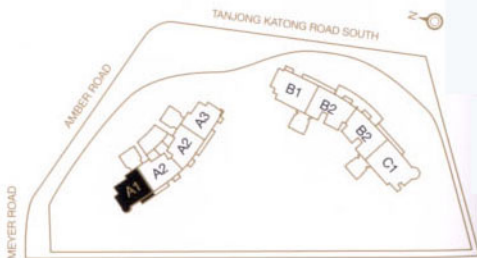
TYPE A1

3 Bedroom



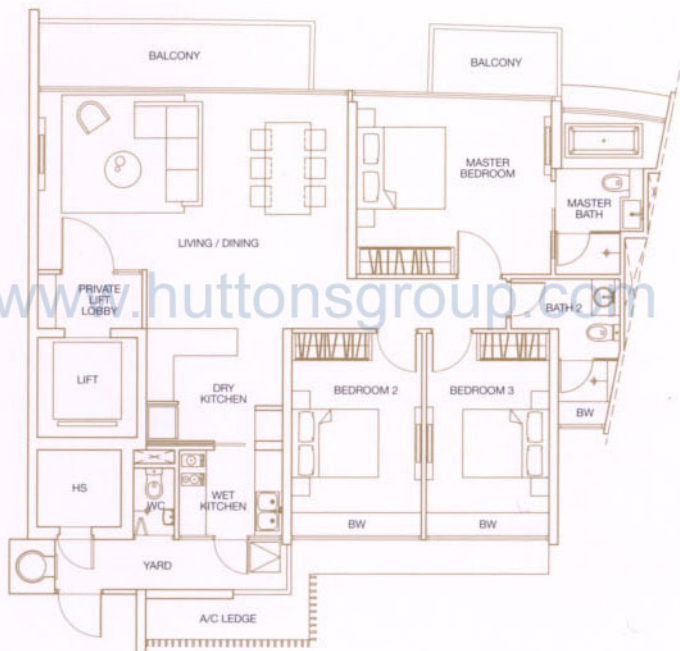
144 sq.m.

#02-01 to #27-01



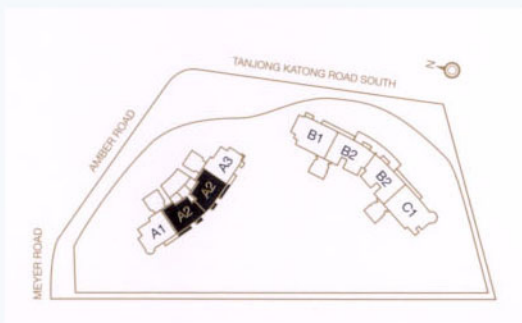
TYPE A2

3 Bedroom



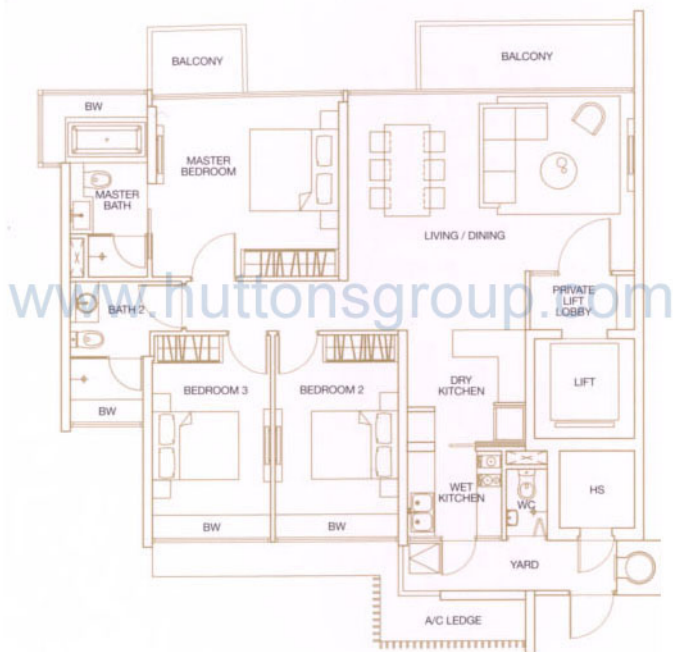
142 sq.m.

#02-02 to #27-02, #02-03 to #27-03



TYPE A3

3 Bedroom



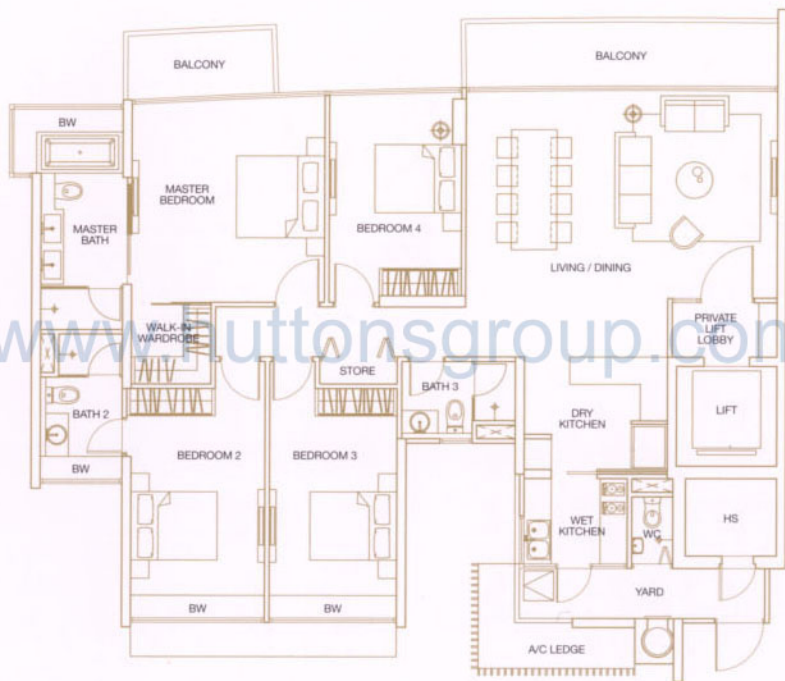
134 sq.m.

#02-04 to #27-04



TYPE B1

4 Bedroom



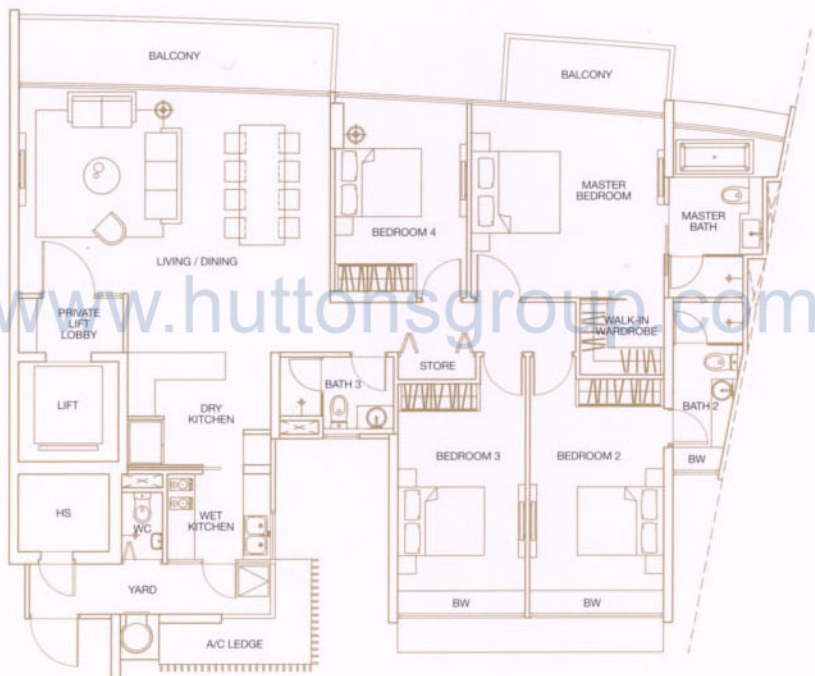
188 sq.m.

#03-05 to #24-05



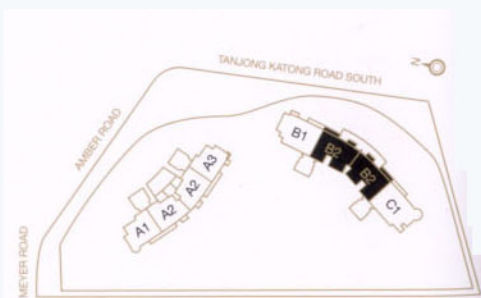
TYPE B2

4 Bedroom



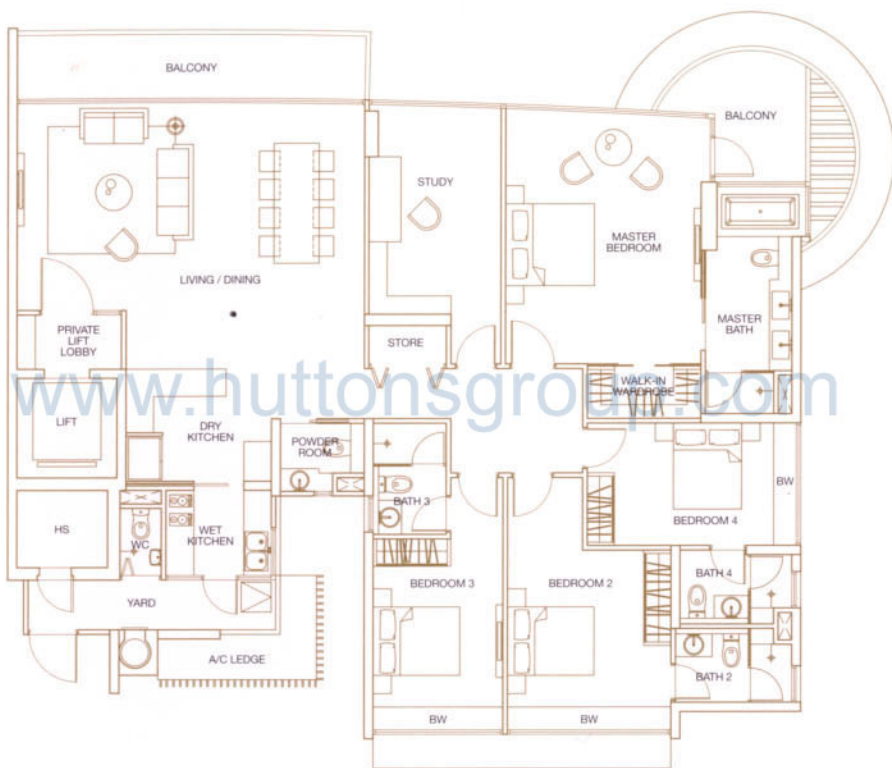
182 sq.m.

#03-06 to #24-06, #03-07 to #24-07



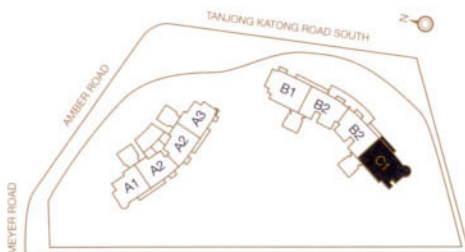
TYPE C1

4+1 Bedroom

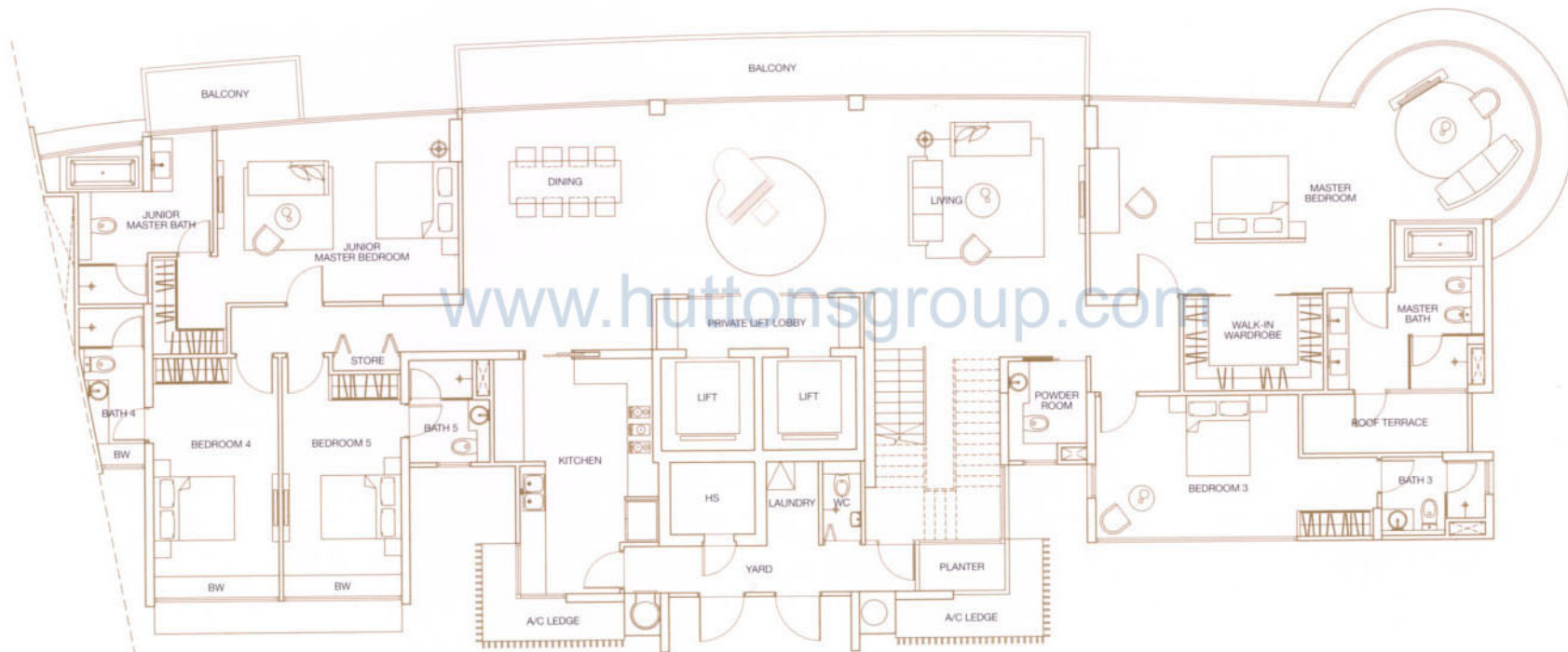


227 sq.m.

#03-08 to #24-08



TYPE PH1



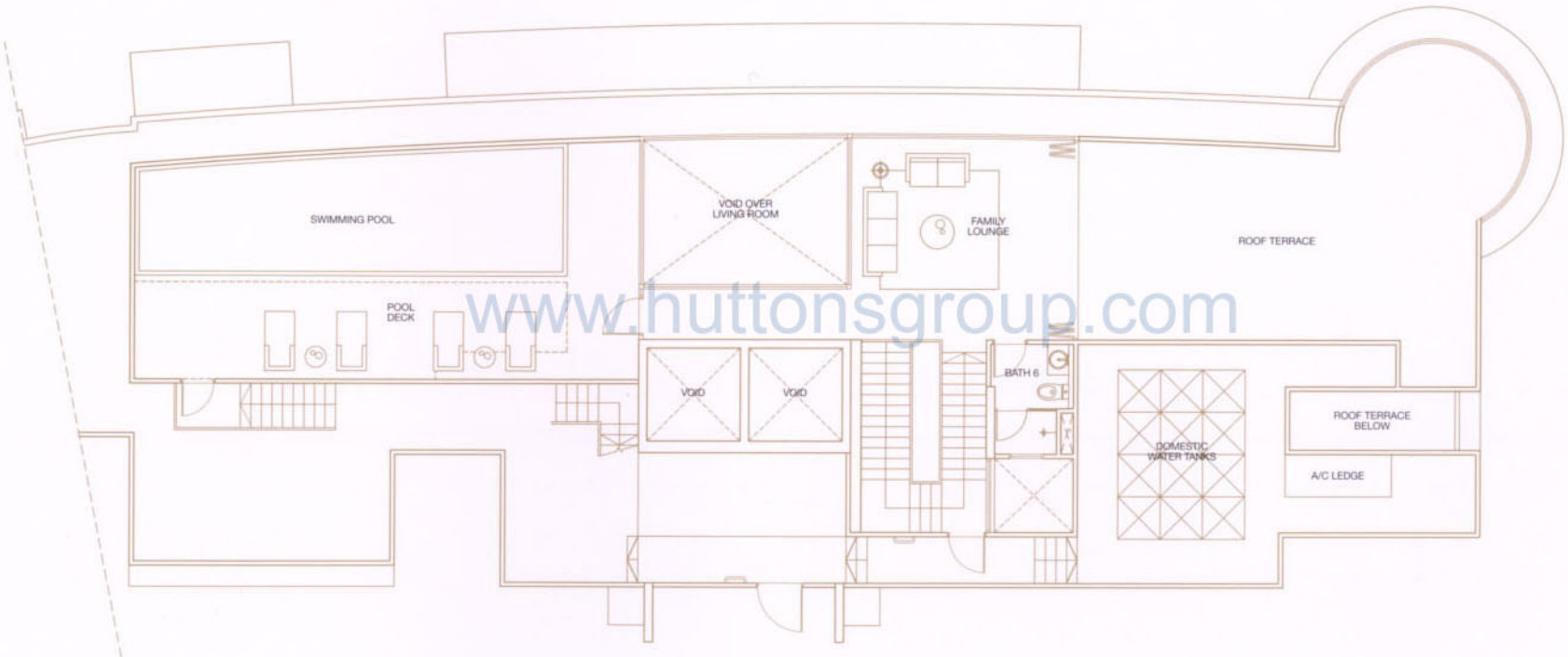
(Lower Level)

383 sq.m.
#26-08

All plans are not to scale and subject to change as may be approved by the relevant authorities. Indicated floor areas are approximate and subject to final survey.
Note: A/C Ledge - Air-con Ledge, HS - Household Shelter, BW - Bay Window.

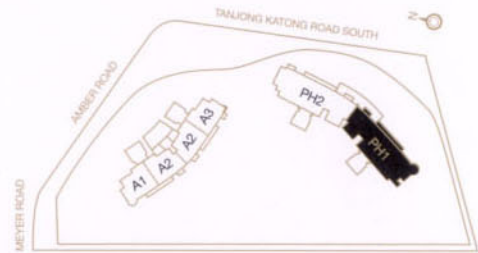


TYPE PH1



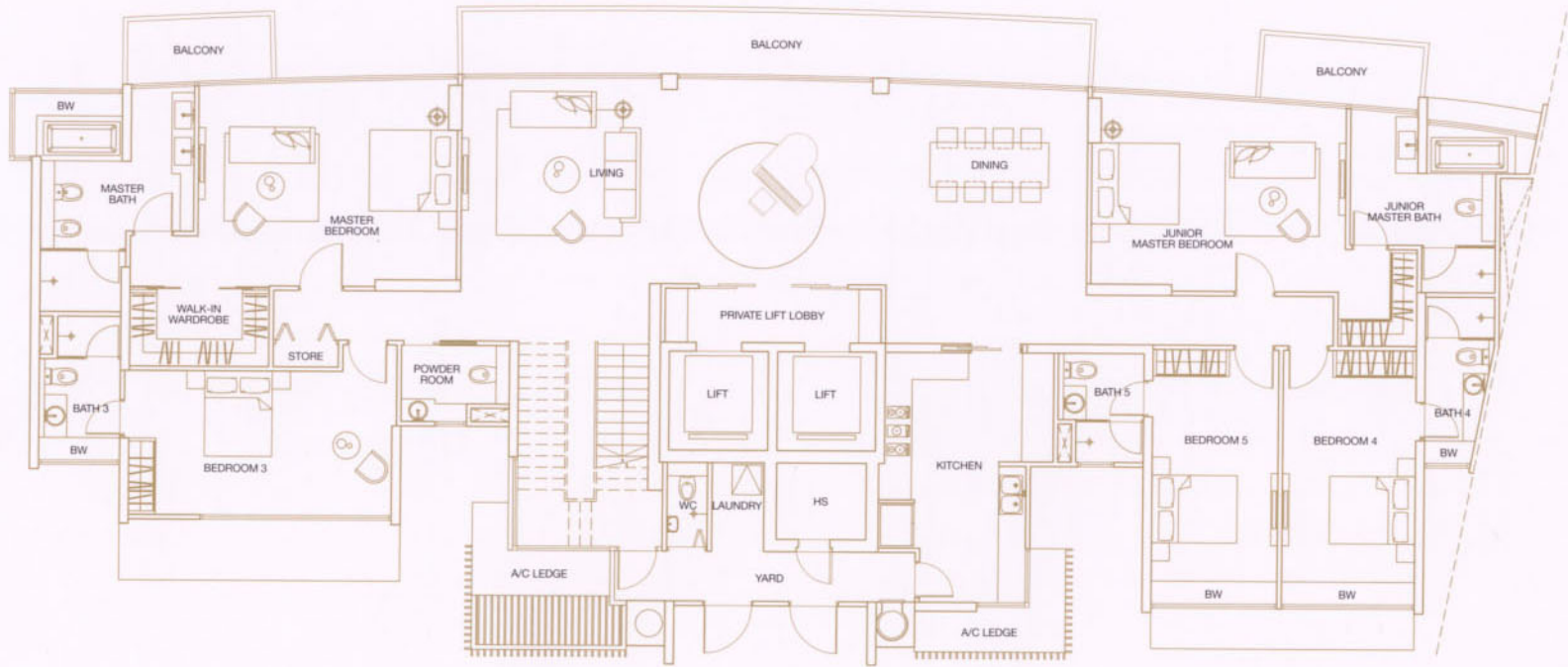
(Upper Level)

193 sq m



All plans are not to scale and subject to change as may be approved by the relevant authorities. Indicated floor areas are approximate and subject to final survey.
Note: A/C Ledge - Air-con Ledge, HS - Household Shelter. Dotted line at Pool Deck indicates filtration pump room and balancing tank below Pool Deck.

TYPE PH2



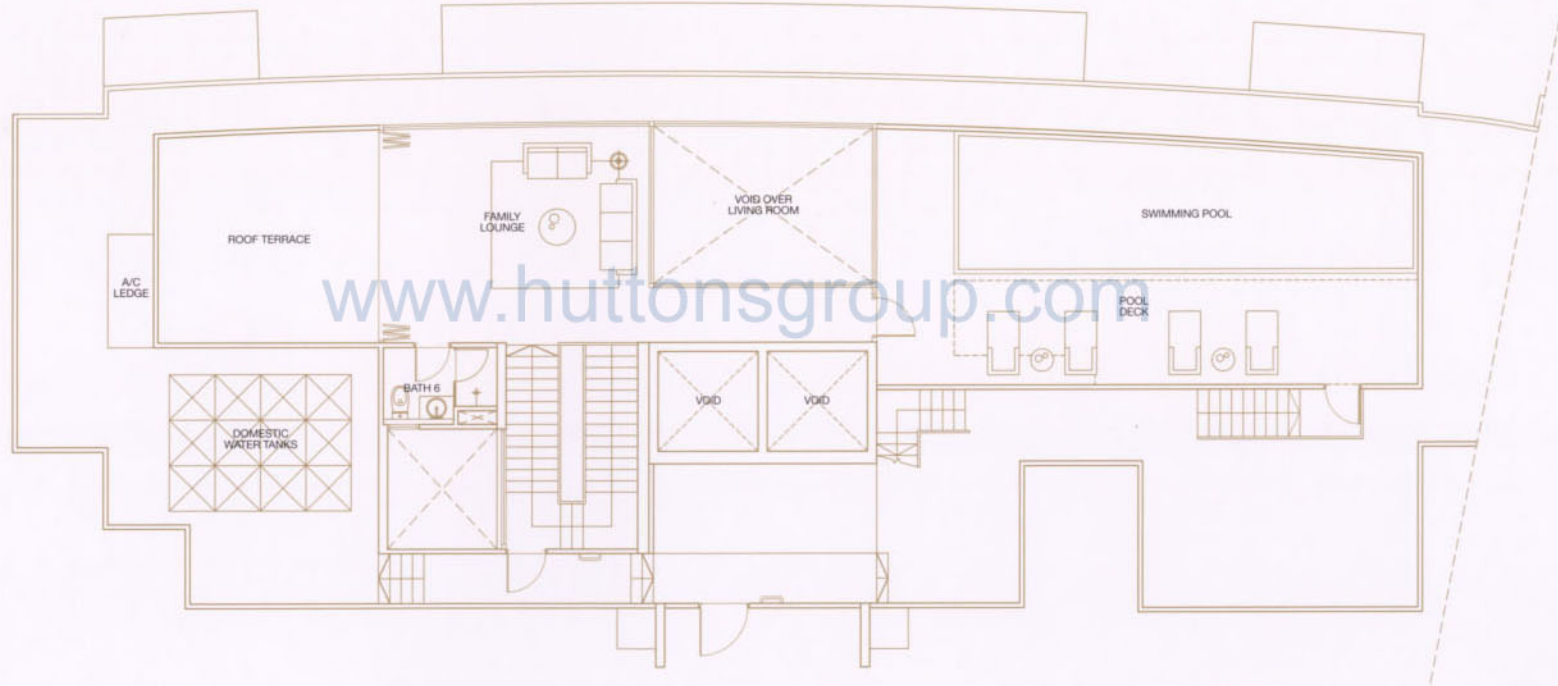
(Lower Level)

358 sq.m.
#26-06

All plans are not to scale and subject to change as may be approved by the relevant authorities. Indicated floor areas are approximate and subject to final survey.
Note: A/C Ledge - Air-con Ledge, HS - Household Shelter, BW - Bay Window.



TYPE PH2



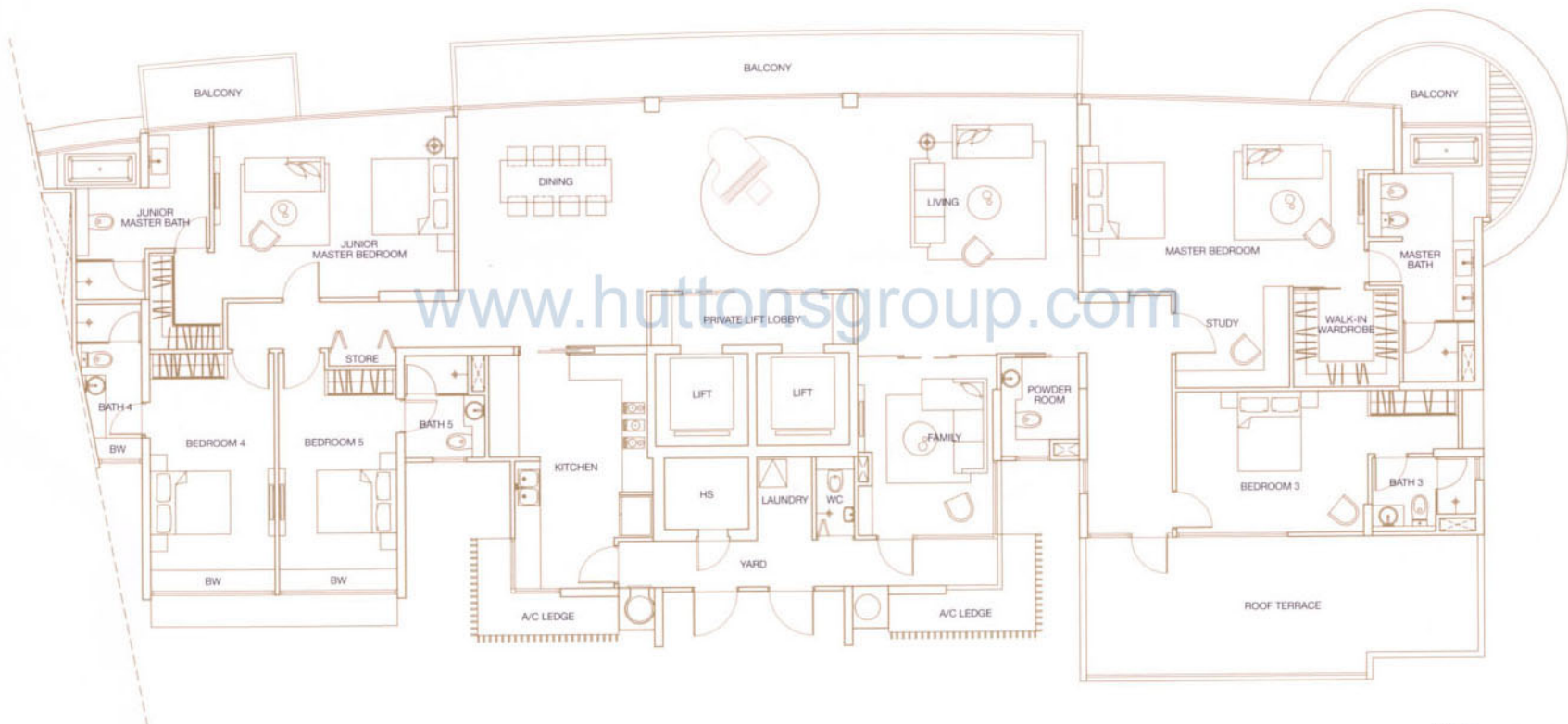
(Upper Level)

163 sq m

All plans are not to scale and subject to change as may be approved by the relevant authorities. Indicated floor areas are approximate and subject to final survey.
Note: A/C Ledge - Air-con Ledge, HS - Household Shelter. Dotted line at Pool Deck indicates filtration pump room and balancing tank below Pool Deck.

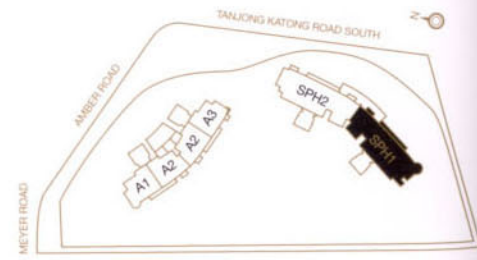


TYPE SPH1

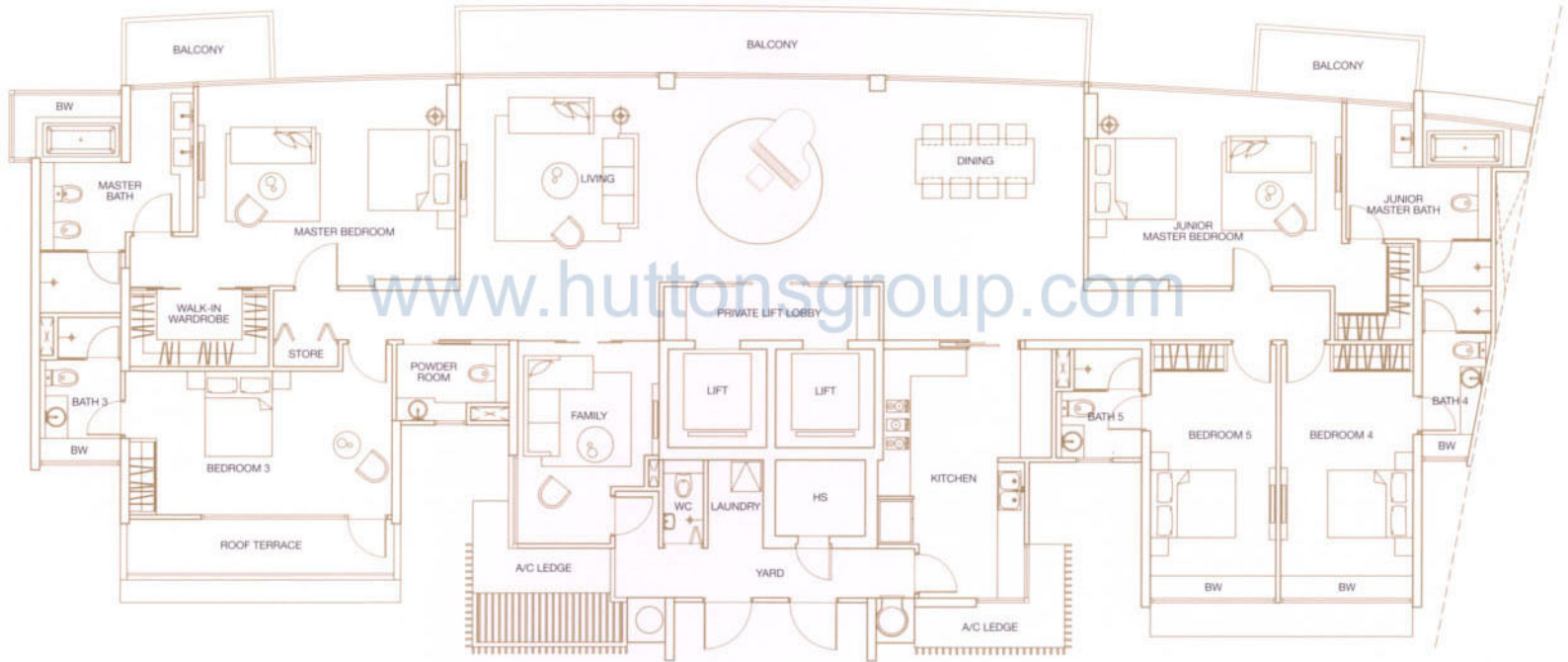


411 sq.m.
#25-08

All plans are not to scale and subject to change as may be approved by the relevant authorities. Indicated floor areas are approximate and subject to final survey.
Note: A/C Ledge - Air-con Ledge, HS - Household Shelter, BW - Bay Window.



TYPE SPH2



366 sq.m.
#25-06

All plans are not to scale and subject to change as may be approved by the relevant authorities. Indicated floor areas are approximate and subject to final survey.
Note: A/C Ledge - Air-con Ledge, HS - Household Shelter, BW - Bay Window.

